



**Competency
Australia**

TLIF5017

Investigate Rail Safety Incidents

**Apply investigation techniques
in the context of the railway.**

**During this course you will learn
how to plan investigations,
collect and analyse information
and prepare compliant rail
safety investigation reports.**

Become familiar with key documents and guidelines including:

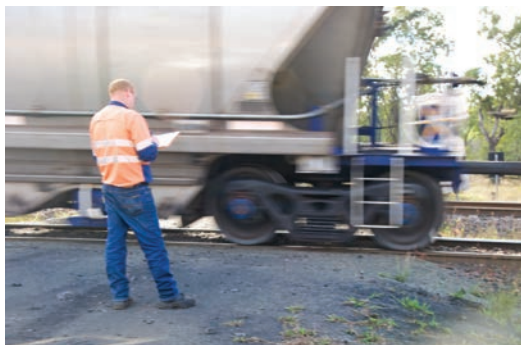
- Transport Safety Investigation Act
- ATSB railway accident investigation guidelines
- RISSB Code of Practice for Rail Safety Investigation
- Rail Safety National Law and Regulations

Location and Availability

This course is available online or face-to-face for private groups by arrangement. It is available at our Newcastle (NSW) training centre or can be delivered at your own location.

Customisation

This course can be customised to include your organisation's requirements including policies, procedures and forms.



Duration

Rail Safety Incident Investigation is a two day course. This includes theory, case study activities and assessment.

Course Content

This course introduces industry best practice in incident investigation in the context of the rail industry.

Topics covered include:

- Roles and Responsibilities
- Investigation Types
- Gathering Evidence
- Interviewing Witnesses
- Organising and analysing evidence
- Preparing, reviewing and closing out reports

Nationally Recognised Training

On successful completion of the course assessment, you will be issued with a Statement of Attainment for the following unit of competency:



TLIF5017
Investigate Rail Safety Incidents

Start earning your Diploma!

**This unit counts as direct credit towards:
TLI50621 Diploma of Rail Operations
Management**