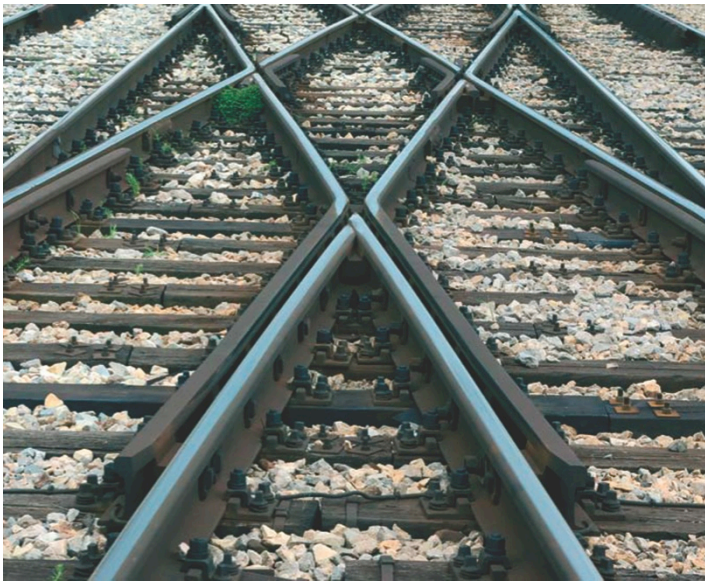




**Competency  
Australia**

## TLI50618 Diploma of Rail Operations Management



## Dates 2020

June Intake

15th June, 2020

October Intake

12th October 2020

## Nationally Recognised Training in Rail Operations Management

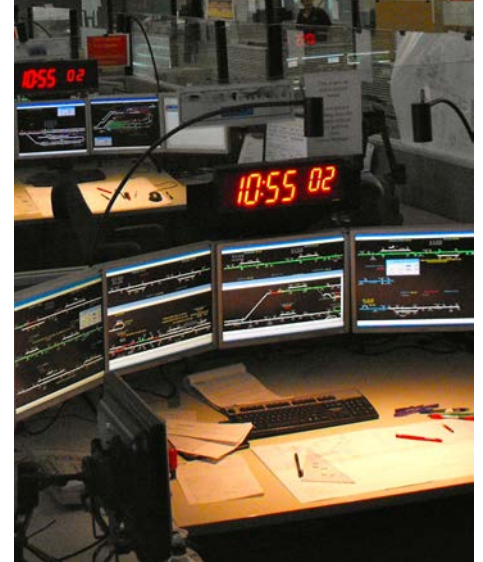
TLI50615 Diploma of Rail Operations Management has been developed for individuals wishing to progress their careers in the areas of Network Control, Passenger Services Management, Rail Freight Management, Rail Operations Management and Rail Maintenance Management.

Whether looking to take the next step into a management role or formalise your existing knowledge and experience with a qualification, Competency Australia can assist.

**Register for our next intake by the 1st June and receive a huge 20% early bird discount. Discounts are also available for groups of 3 or more.**



# Competency Australia



## Introduction to Rail Operations Management

Topics covered include :

- Safety Management Systems and Rail Safety Law
- Safe-working rules & procedures, including track protection, train separation and signalling systems
- Fixed assets and rolling stock
- Train Planning
- Train Crewing and Rostering
- Management of Change

## Rail Infrastructure

In this subject we study :

- Work, Health and Safety, including regulations and duty holders under the law
- Reliability, Availability, Maintainability and Safety
- Rail Asset Management
- The Wheel-Rail Interface
- Railway Communication Systems
- Rail Resource Management (RRM) principles including management and leadership

## Network and Localised Train Control

This subject is focused on :

- Principles of Train Control
- Disruption Management and Degraded Mode Operation
- Emergency Planning, Preparedness, Response and Recovery
- Rail Safety Investigation and Reporting, including derailments and other notifiable occurrences

TLI50618 – Diploma of Rail Operations Management is comprised of 14 units - 8 Core and 6 electives.

### Core Units

Core units include : TLIE4032 Use internal communication systems for rail industry regulatory compliance, AHCOHS501A Manage Occupational Health and Safety (OHS) processes, TLIF4104 Manage change in the rail safety environment, TLIF4107 Respond to notifiable rail safety occurrences, TLIF5021 Apply safeworking rules and procedures, TLIL5066 Apply rail resource management principles, TLIW5001 Apply rail communication systems, TLIW5002 Manage rail assets and interfaces.

See our website for information regarding current electives <http://CompetencyAustralia.edu.au>



# Competency Australia

## Not able to commit to 12 months study?

Not a problem! Work towards the Diploma by completing individual units of competency online or face-to-face.

Selected elements of the course can also be carried out as a stand-alone non-accredited courses, or as elective units in your Masters of Engineering course.



## Competency Australia

Competency Australia is a Registered Training Organisation (RTO Code 40647) specialising in the provision of high quality training, assessment and competence management services to the rail industry.

For more information, please email [Info@CompAus.com.au](mailto:Info@CompAus.com.au) call +612 4040 9110, or visit [CompetencyAustralia.edu.au](http://CompetencyAustralia.edu.au)

## Assessment

During each session, students will be required to complete a range of assessments, including work place activities and research projects. They will also be required to respond to case studies and consider hypothetical scenarios.

## Course Material

The material used in this course was developed in the Rail Cooperative Research Centre (CRC) by industry consultants using training materials provided by two major rail operators : Railcorp and Queensland Rail.

This is a Nationally Recognised Training



course under the Australian Qualifications Framework

## Brett Doak - Your Tutor

Brett is the primary tutor for the Diploma of Railway Operations. He has close to 40 years of experience working in the rail industry.

His range of technical knowledge, expertise and experience includes train planning, network control, rail safety accreditation, railway safe-working, development and review of network rules and procedures, safety assurance, emergency planning, preparedness and management, compliance audits, investigations, and project management.

## John Aitken

John is an expert in the field of railway communications and engineering solutions. He provides tutoring and advice in the communications and engineering aspects of the diploma.

## Next Course 15<sup>th</sup> June 2020

### Duration

The course is carried out over a 12 month period, divided into 3 sessions, each 13 weeks in length. There are 3 intakes per year.

### Location

Training is carried out through distance education. Communication with the tutors is through a combination of email, telephone and web-based activities.

### Pre-Requisites

There are no formal pre-requisites for this course. Learners must be employed in the rail industry.

### Session Costs

Full Registration Session	\$3,520
Early Bird Discount (Register at least 4 weeks in advance)	\$2,800
Group Discount	\$2,500
Initial admin fee (non-refundable)	\$300